

250

MERCER ST

**RETAIL / RESTAURANT
OPPORTUNITY
IN NOHO**



SIGNAGE SIGNAGE

**S
I
G
N**

**S
I
G
N**

Conceptual Storefront Rendering | Subject to Landmark Approval



250 Mercer Street

Northeast corner of W 3rd St
NoHo, NYC

APPROXIMATE SIZE

7,406 sq. ft. - Ground Fl

4,333 sq. ft. - Lower Level

FRONTAGE

143' wrap-around

CEILING HEIGHT

12-21 feet on Ground Fl

POSSESSION

Immediate

NEIGHBORS

Think Coffee, Spring Cafe Aspen, DIG,
Bond Vet, Kickclusive NYC, Rumble,
Kith Women, Yankeekicks, Equinox,
Rocco's Sports & Recreation

COMMENTS

- Retail/Restaurant Opportunity
- All uses considered
- Ability to vent
- Formerly Gristedes
- Potential for blade signage
- Located in the heart of NYU's campus
and steps from Washington Square Park



ZELNIK

Existing condition

250

MERCER ST

RETAIL / RESTAURANT
OPPORTUNITY IN NOHO

EXCLUSIVE AGENTS

Jeremy Banilevi

c: 516.493.6046

jeremy@zelnickco.com

Brandon Roselli

c: 203.895.1918

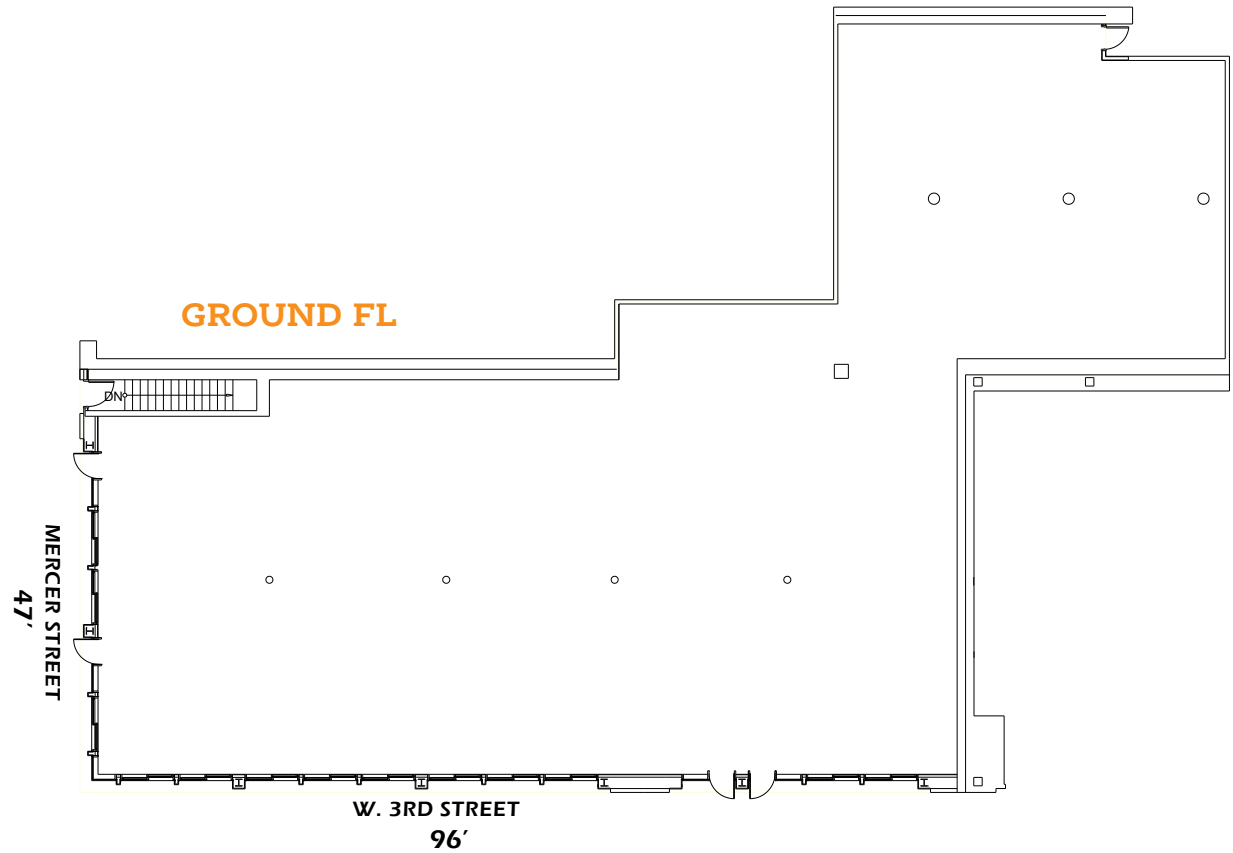
brandon@zelnickco.com

Cory Zelnik

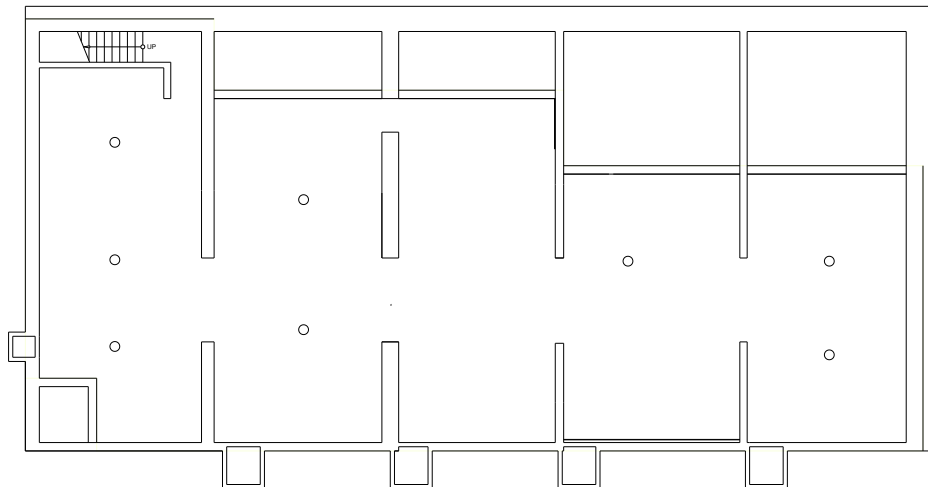
c: 917.414.6208

cory@zelnickco.com

zelnickco.com



LOWER LEVEL





SUBWAY RIDERSHIP (2023)

8th Street-NYU (N,R):
3,780,675 annual riders

Astor Street (6):
3,717,074 annual riders

**Broadway-Lafayette St +
Bleecker Street Subways:**
9,268,403 annual riders

