

RETAIL/OFFICE FOR LEASE

HERALD SQUARE

34TH ST

36 WEST 34TH STREET



APPROXIMATE SIZE:
1,955 sq. ft. 2nd Floor

POSSESSION:
Immediate

COMMENTS:

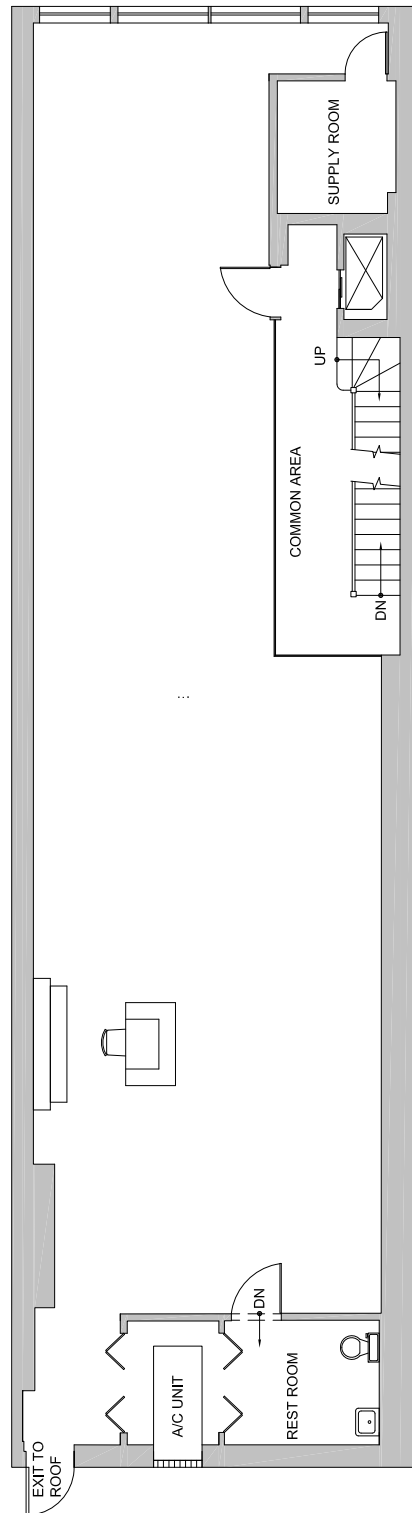
- Currently vacant
- Blade and flag signage available
- Elevator building situated in the heart of Herald Square and 34th Street
- 5-story, 19,268 sf mixed-use building
- Steps from Penn Station



ZELNIK

FLOOR PLAN

36 W 34th Street | 2nd FL



CONTACT EXCLUSIVE AGENTS

Jason Turner
jason@zelnikco.com

Cory G. Zelnik
cory@zelnikco.com

Zelnik & Company
(212) 223-2200