

# 243 E 38TH STREET

LOCATED OFF THE CORNER OF SECOND AVENUE

AVAILABLE

AVAILABLE

AVAILABLE

AVAILABLE

conceptual rendering

## MURRAY HILL RETAIL FOR LEASE

### APPROXIMATE SIZE:

1,248 sq ft. - Ground

### FRONTAGE:

44'

### ASKING RENT:

Upon request

### NEIGHBORS:

Abitino's Pizzeria  
Gymoree  
EONS Mediterranean  
Ground Central Coffee Co.  
Gristedes  
NYU Langone  
Duane Reade  
Everbrook Academy

### COMMENTS:

- Space can be vented
- Across from NYU Langone 14-story Ambulatory Care Center
- Dense residential with numerous medical and doctors offices on the block
- Potential for flag signage
- Available for immediate possession
- Visible from Second Avenue

1/4 mile radius



26,754

Population



\$161,209

Avg. Household Income



56,870

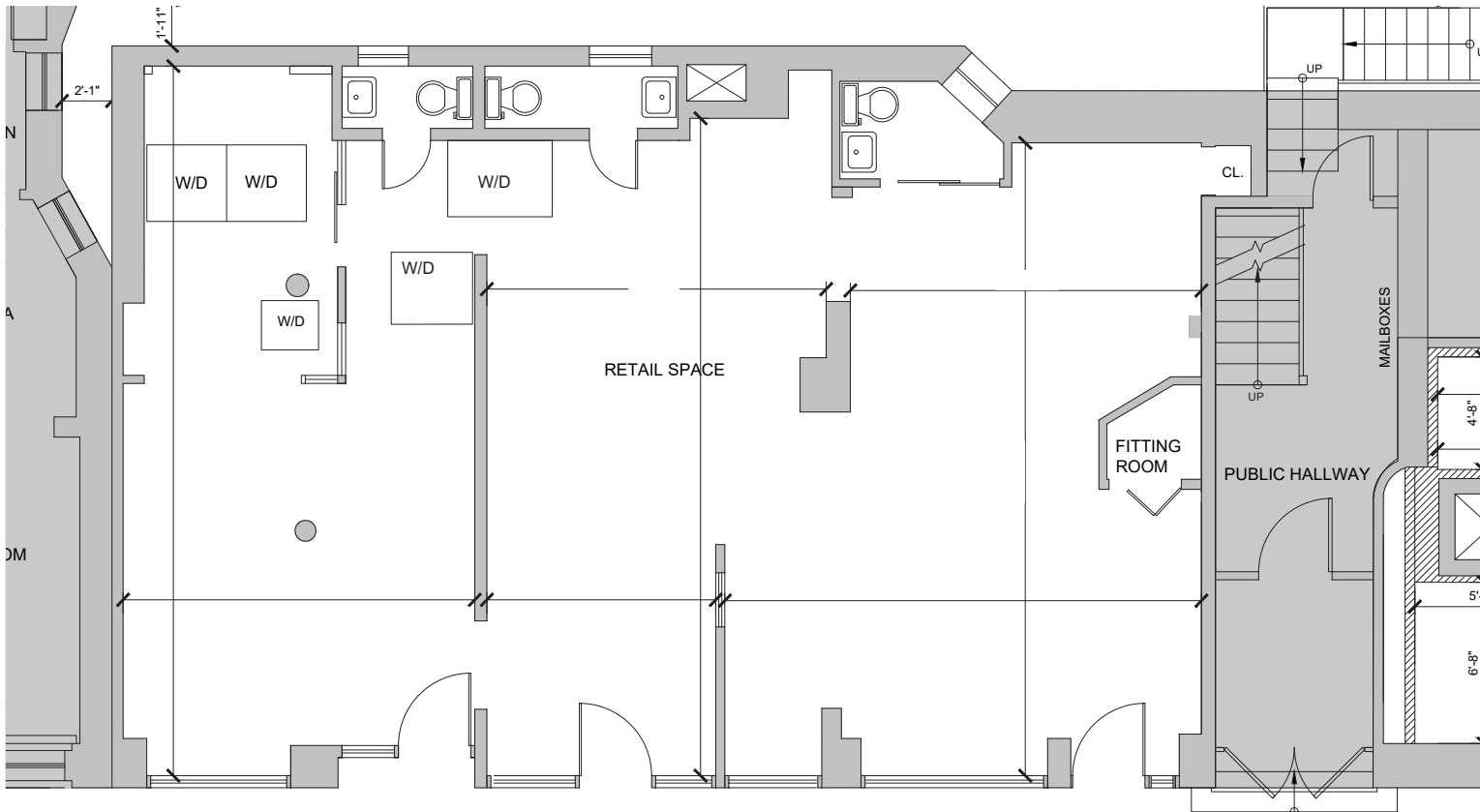
Employees



ZELNIK

# 243 E 38TH STREET

LOCATED OFF THE CORNER OF SECOND AVENUE



## CONTACT EXCLUSIVE AGENTS

Helen Demetrious  
helen@zelnikco.com

Cory Zelnik  
cory@zelnikco.com

Zelnik & Company  
(212) 223-2200