

206 W 125TH STREET

LOCATED JUST OFF CORNER OF ADAM CLAYTON POWELL



APPROXIMATE SIZE:
792 sq. ft. - Ground Floor

FRONTAGE:
15'

ASKING RENT:
Upon request

- COMMENTS:**
- Ceiling height 13'
 - Available for immediate possession
 - One block from Harlem Center Mall
 - High traffic location
 - Heart of the bustling 125th St retail corridor amongst many new developments
 - Close to the 125th Street 2,3 subway

NEIGHBORS:



1/4 mile radius



11,287

Population



\$141,737

Avg. Household Income



6,048

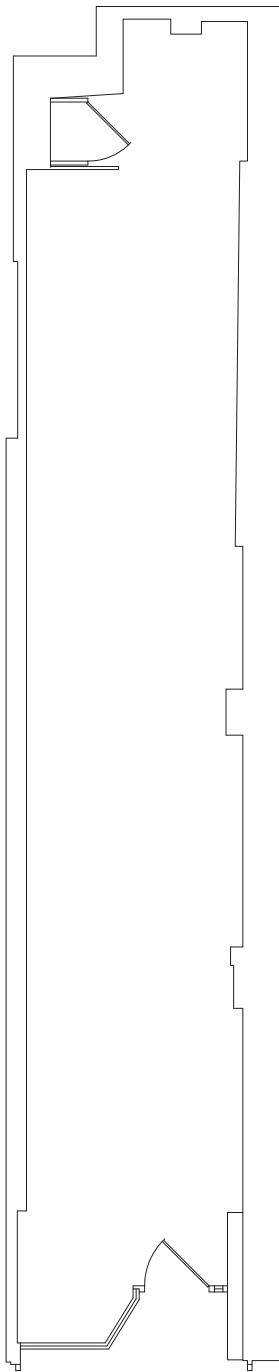
Businesses



ZELNIK

206 W 125TH STREET

LOCATED JUST OFF CORNER OF ADAM CLAYTON POWELL



CONTACT EXCLUSIVE AGENTS

Cory G Zelnik
cory@zelnikco.com

Zelnik & Company LLC
ph: (212) 223-2200

Jason Turner
jason@zelnikco.com