

# 2090 ADAM CLAYTON POWELL JR BLVD

LOCATED STEPS OFF THE 125TH STREET CORRIDOR



**APPROXIMATE SIZE:**  
1,411 sq. ft. - Ground Floor

**FRONTAGE:**  
34'

**ASKING RENT:**  
Upon request

## COMMENTS:

- Currently vacant
- High traffic location
- Available for immediate possession
- Dense residential population
- Steps from the bustling 125th St retail corridor amongst many new developments
- Close to the 125th Street 2,3 subway at Lenox Ave with 4,989,981 annual riders

## NEIGHBORS:



1/4 mile radius



11,287

Population



\$141,737

Avg. Household Income



6,048

Businesses

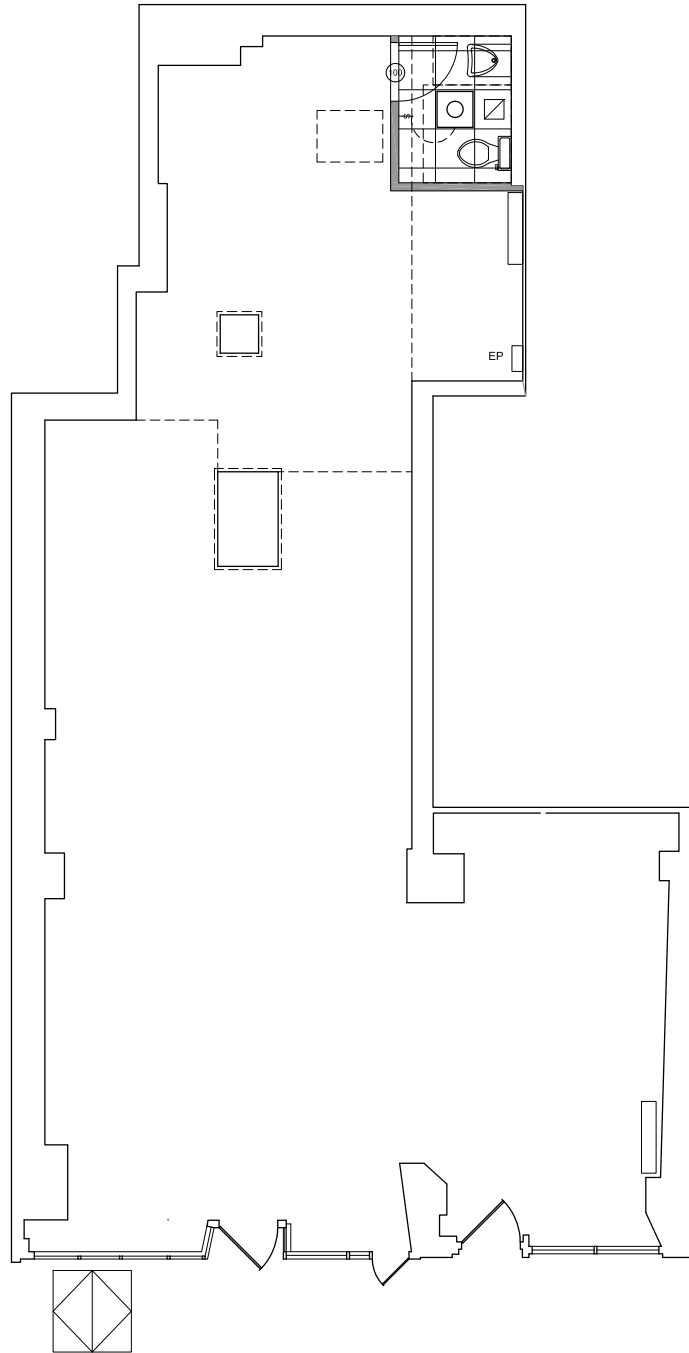


ZELNIK

**HARLEM RETAIL OPPORTUNITY**

**2090 ADAM CLAYTON POWELL BLVD**

*Located between 124th & 125th Streets*



**CONTACT EXCLUSIVE AGENTS**

**Cory G Zelnik**  
cory@zelnikco.com

**Zelnik & Company LLC**  
ph: (212) 223-2200

**Jason Turner**  
jason@zelnikco.com