



ZELNIK



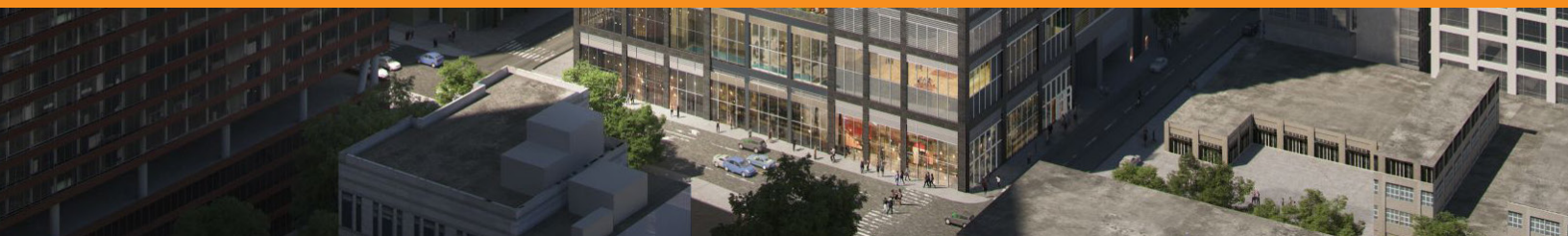
Introducing

THE ORCHARD

27-48 Jackson Ave
Long Island City

THE TALLEST BUILDING IN QUEENS

68-story, 824-unit development
New Construction - Completion Q1 2026



LONG ISLAND CITY RETAIL OPPORTUNITY

27-48 JACKSON AVENUE

FULL BLOCK BETWEEN ORCHARD & QUEENS STREETS



APPROXIMATE SIZE:

12,944 sq. ft. - Ground Floor
1,607 sq. ft. - Basement

Possible divisions:

5,535 sq. ft. - Ground 1 (corner)
3,486 sq. ft. - Ground 2 (in-line)
1,671 sq. ft. - Ground 3 (in-line)
2,252 sq. ft. - Ground 4 (corner)

FRONTAGE:

Over 300' of wrap-around

NEIGHBORING TENANTS:

Sweetleaf
Aloft
Hyatt Place
Tacombi
Trader Joe's
Dutch Kills
Murray's Cheese Bar
Target

ASKING RENT:

Upon request

COMMENTS:

- Retail at the base of Queens Tallest building; a 68-story, 824-unit development
- Two story parking garage on site
- Possession: Q1 2026
- Soaring 20' ceilings
- Near Queens Plaza subway lines (E,M,R)

1/4 mile radius



6,494

Population



\$157,206

Avg. Household Income



3,228

Employees

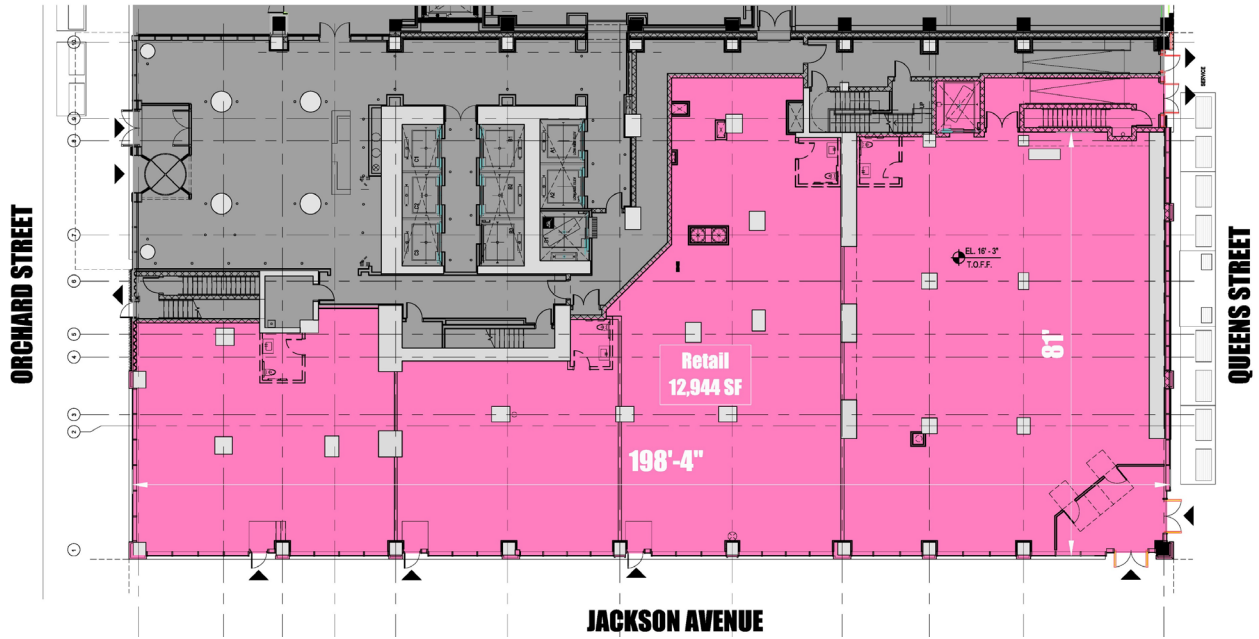


ZELNIK

LONG ISLAND CITY RETAIL OPPORTUNITY

27-48 JACKSON AVENUE

FULL BLOCK BETWEEN ORCHARD & QUEENS STREETS



ZELNIK

LONG ISLAND CITY RETAIL OPPORTUNITY

27-48 JACKSON AVENUE

FULL BLOCK BETWEEN ORCHARD & QUEENS STREETS



ZELNIK



CONTACT EXCLUSIVE AGENTS

Helen Demetrious
helen@zelnickco.com

Cory Zelnik
cory@zelnickco.com

Zelnik & Company
ph: (212) 223-2200