

31-08 STEINWAY STREET

BETWEEN 31ST AVENUE & BROADWAY



APPROXIMATE SIZE:

10,393 sq. ft. - Ground Floor
5,638 sq. ft. - Basement

APPROXIMATE FRONTAGE:

65'

ASKING RENT:

Upon request

NEIGHBORS:

Banana Republic Factory
Wing Stop
CityMD
PingPod
German Doner Kabab
Bath & Body Works
CVS
Popeyes (coming soon!)

COMMENTS:

- Receiving entrance on 31st Avenue
- Available for immediate possession
- Formerly Fallas
- Excellent visibility with heavy foot & vehicular traffic
- Q101 bus stop located directly in front of space
- 1 block from M/R trains
- Located in densely populated residential neighborhood

1/4 mile radius



11,404

Population



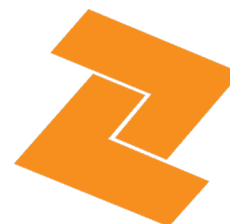
\$94,122

Avg. Household Income



3,011

Businesses

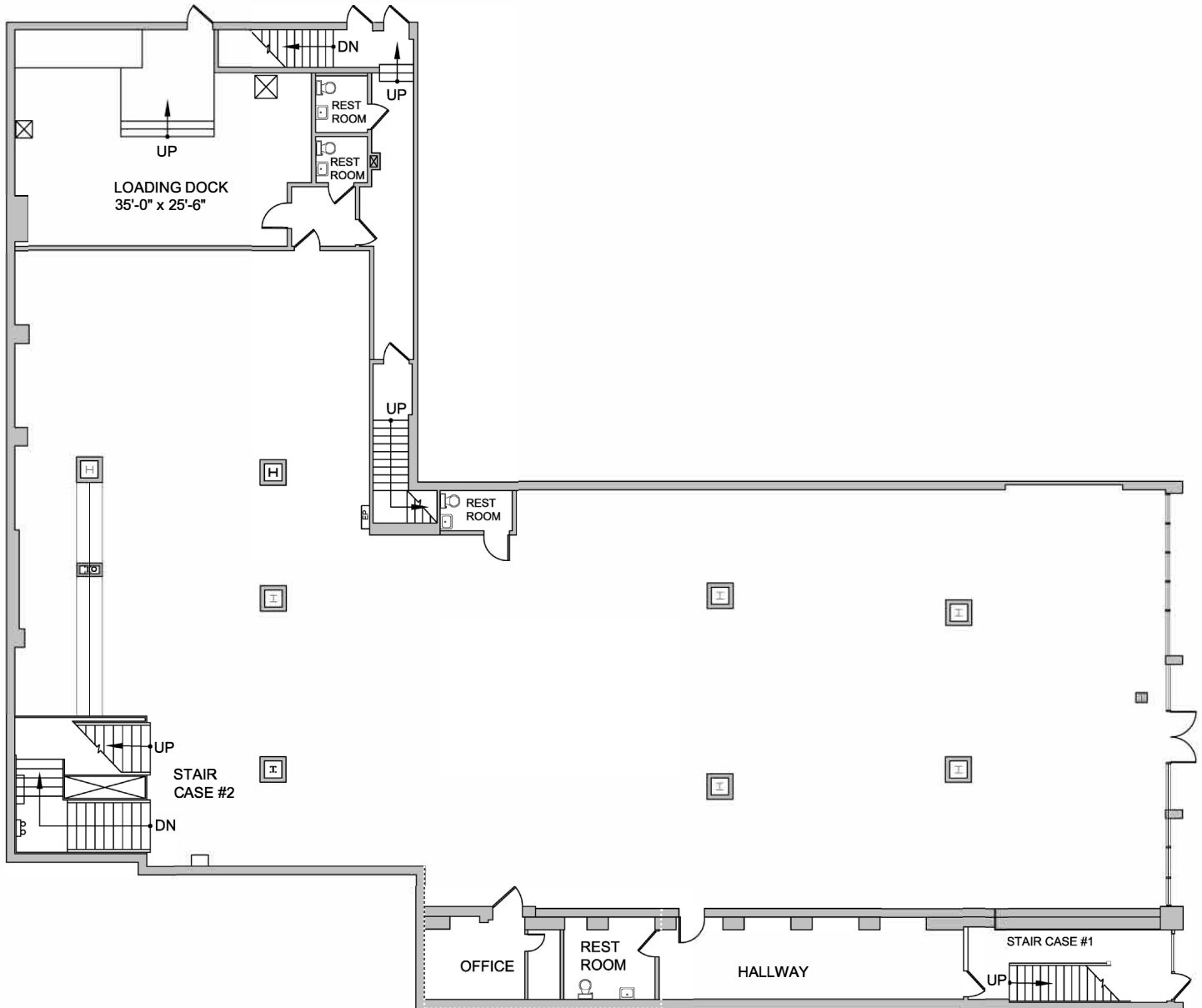


ZELNIK

GROUND FLOOR

31-08 STEINWAY STREET

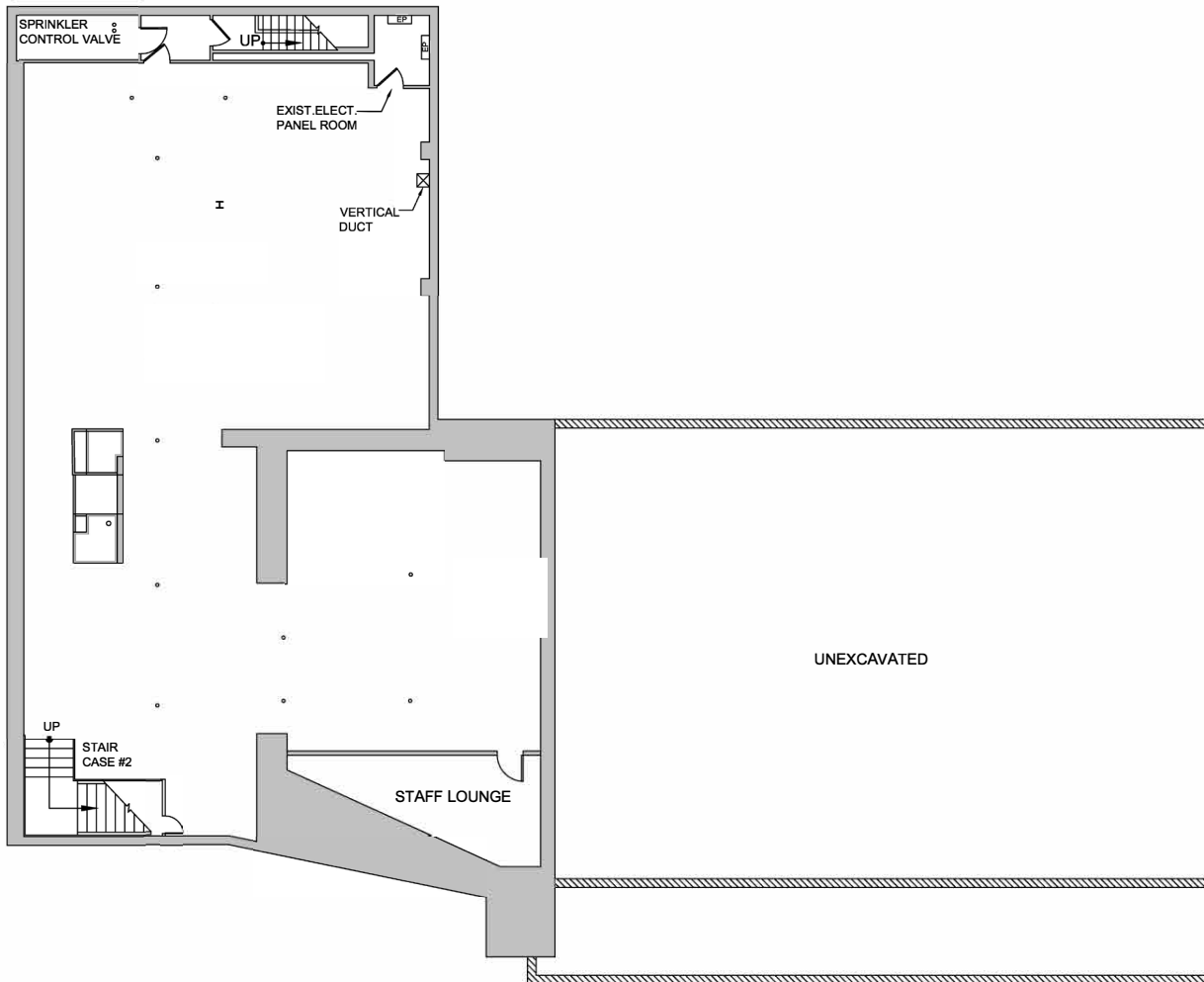
Located between 31st Avenue & Broadway



BASEMENT

31-08 STEINWAY STREET

Located between 31st Avenue & Broadway



FOR MORE INFORMATION

Helen Demetrious
helen@zelnicco.com

Cory G Zelnik
cory@zelnicco.com

Zelnic & Company LLC
ph: (212) 223-2200