

As exclusive agents, we are pleased to present:

281 Mott Street

Located between Prince & E. Houston Streets



Approximate Size:
677 sq. ft. - Ground Floor

Asking Rent:
Upon request

Possession:
Immediate

Comments:

- Ceiling Height: 12'
- Great shopping corridor full of fashionable, hip boutiques
- Beautiful tree lined street in the heart of NoLiTa

Approximate Frontage:
15'

Neighboring Tenants:

Vince • Space NK • Diptyque • Lord Willy's • Coclico
Gant • Rebecca Hossack • Milk Bar • Goorin Bros Hat Shop

Cory G Zelnik
President & CEO
cory@zelnikco.com

Jason Turner
jason@zelnikco.com

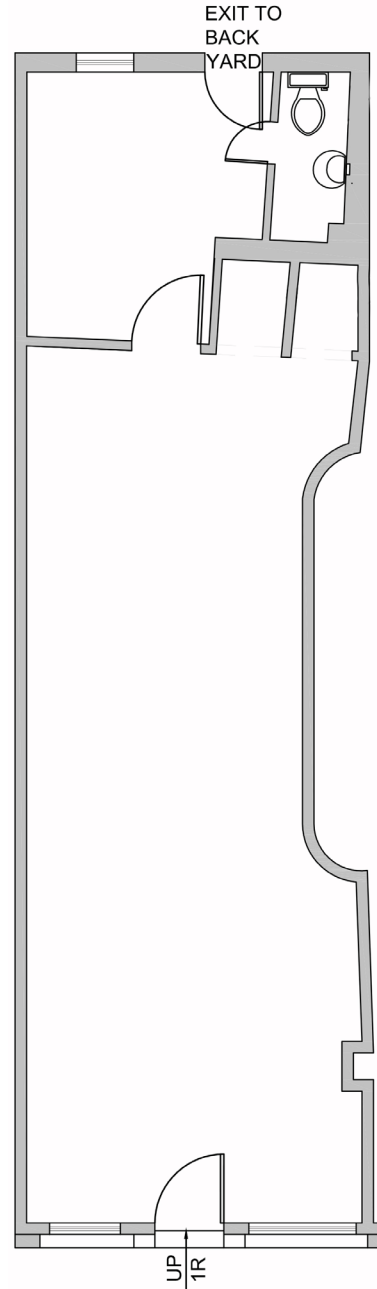
212.223.2200



As exclusive agents, we are pleased to present:

281 Mott Street

Located between Prince & E. Houston Streets



Zelnik & Company LLC 424 Madison Avenue New York, NY 10017 212.223.2200 phone 212.223.0004 fax zelniko.com

The presentation of this property is submitted subject to errors, omissions, change of price or conditions prior to sale or lease. The information contained herein was obtained from sources believed to be reliable; however, Zelnik & Company LLC makes no guarantees, warranties, or representations as to the completeness or accuracy thereof.