

As exclusive agents, we are pleased to present:

17 Greenwich Avenue

Between Christopher Street & West 10th Street



Approximate Size:

1,214 sq. ft. - Ground Floor

1,267 sq. ft. - Basement

Asking Rent:

Upon request

Comments:

- Close proximity to the West 4th (A,B,C,D,E,F,M) Subway Station with over 13,955,065 annual riders
- Half block to the 9th Street PATH Station
- Busy location with excellent foot traffic
- All uses considered
- Formerly Second Time Around

Possession:

Immediate

Approximate Frontage:

18'

Neighboring Tenants:

Doodle Doo's • Quality Eats • Johnathan Adler • Olio e Più
Blue Mercury • Umami Burger • Citarella • Rosemary • Liquiterria

Cory G Zelnik
President & CEO
cory@zelnikco.com

Jason Turner
jason@zelnikco.com

212.223.2200

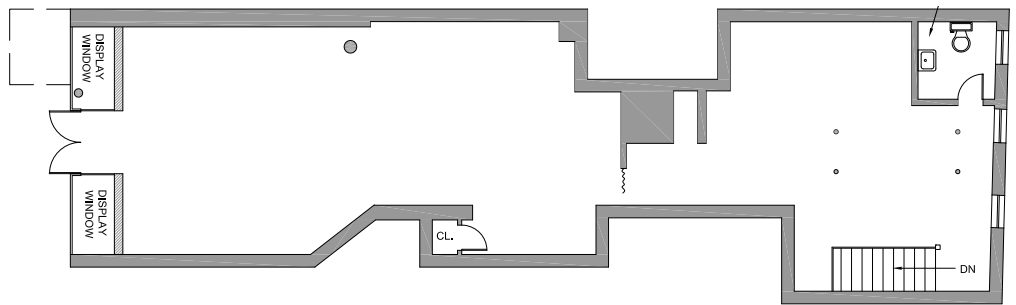


As exclusive agents, we are pleased to present:

17 Greenwich Avenue

Between Christopher Street & West 10th Street

GROUND FLOOR



BASEMENT

