

As exclusive agents, we are pleased to present:

117 Greenwich Avenue

Located at the corner of Jane Street



Approximate Size:

637 sq. ft. Ground Floor "A"
357 sq. ft. Ground Floor "B"
456 sq. ft. Ground Floor "C"

Asking Rent:

Upon request

Comments:

- Situated in the West Village
- Close proximity to the 14th Street A,C,E,L, which boasts an annual ridership of 14,763,727
- One block from Jackson Square
- Excellent frontage & visibility

Approximate Frontage:

20 ft. Ground Floor "A"
11 ft. Ground Floor "B"
11 ft. Ground Floor "C"

Neighboring Tenants:

Otte • Equinox • Frederic Malle • Juice Press • Think Coffee
Tea & Sympathy • Dell'anima • Odin • A Salt and Battery

Cory G. Zelnik
President & CEO
Cory@zelnikco.com

Jason Turner
Jason@zelnikco.com

212.223.2200

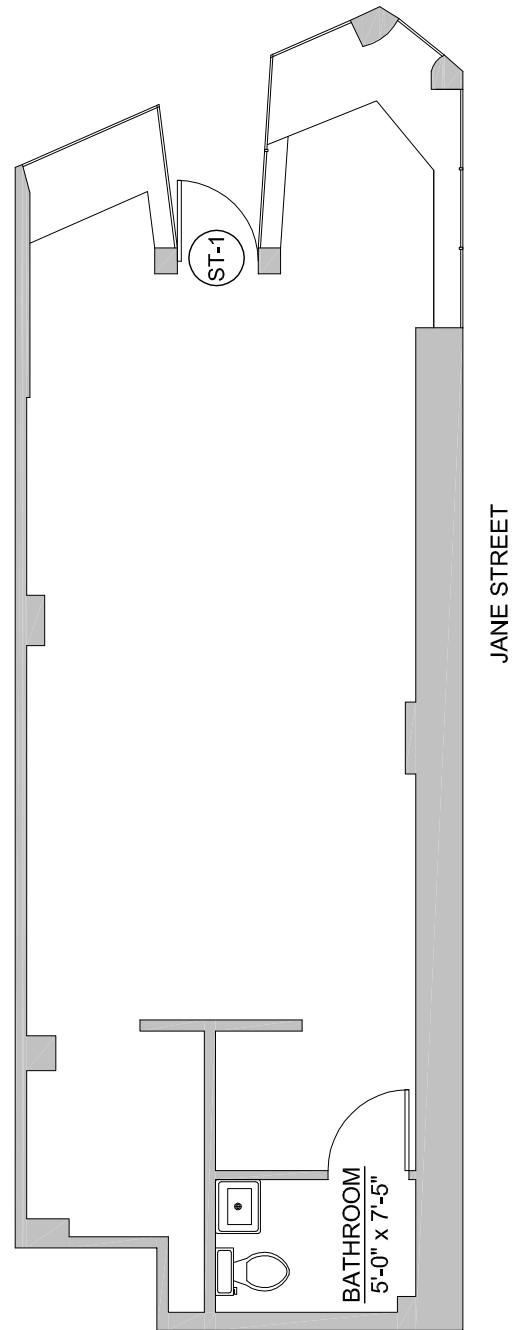


As exclusive agents, we are pleased to present:

117 Greenwich Avenue

Located at the corner of Jane Street

**SPACE A
CORNER**



Zelnik & Company LLC 424 Madison Avenue New York, NY 10017 212.223.2200 phone 212.223.0004 fax zelniko.com

The presentation of this property is submitted subject to errors, omissions, change of price or conditions prior to sale or lease. The information contained herein was obtained from sources believed to be reliable; however, Zelnik & Company LLC makes no guarantees, warranties, or representations as to the completeness or accuracy thereof.